

6. ПЕСЕНКА ЖЕРМОН

45

mf

6

6

mf dim

11 46

47 rit. a tempo

7

7

p

f

22 rit.

rit.

3

3

6. ПЕСЕНКА ЖЕРМОН

C-bassi

45

p *cresc.* *dim.*

Measure 45: Bass clef, two whole notes, a repeat sign, a dotted quarter note, a quarter note, a half note, a quarter note, a half note, a quarter note, a half note, a quarter note, a triplet of eighth notes, and a quarter note. Dynamics: *p*, *cresc.*, *dim.*

11 46

p *cresc.*

Measure 46: Bass clef, two whole notes, a quarter note, a half note, a quarter note, a half note, a quarter note, a half note, a quarter note, a half note, and a quarter note. Dynamics: *p*, *cresc.*

19 47 rit. a tempo rit. rit.

f *sf*

Measure 47: Bass clef, two whole notes, a quarter note, a half note, a quarter note, a half note, a quarter note, a half note, a quarter note, a triplet of eighth notes, and a quarter note. Dynamics: *f*, *sf*. Performance markings: *rit.*, *a tempo*, *rit.*, *rit.*

6. ПЕСЕНКА ЖЕРМОН

V-celli

45

p *cresc.* *div.* *unis.* *dim.* 3

Measure 45: Bass clef, starting with a piano (*p*) dynamic. The measure contains a repeat sign followed by a half note G2, a half note F2, a half note E2, a half note D2, a half note C2, a half note B1, a half note A1, and a half note G1. The dynamics *cresc.* and *div.* are indicated above the staff. The final note G1 is part of a triplet marked *unis.* and *dim.* with a '3' above it.

11 46

p *cresc.*

Measure 46: Bass clef, starting with a piano (*p*) dynamic. The measure contains a half note G2, a half note F2, a half note E2, a half note D2, a half note C2, a half note B1, a half note A1, and a half note G1. The dynamics *cresc.* and *dim.* are indicated above the staff.

19 47

f *rit.* *a tempo* *rit.* *rit.* *sf*

Measure 47: Bass clef, starting with a forte (*f*) dynamic. The measure contains a half note G2, a half note F2, a half note E2, a half note D2, a half note C2, a half note B1, a half note A1, and a half note G1. The dynamics *rit.*, *a tempo*, *rit.*, and *rit.* are indicated above the staff. A hairpin crescendo is shown below the staff. The final note G1 is part of a triplet marked *sf* with a '3' above it.

6. ПЕСЕНКА ЖЕРМОН

Clarinetto I

45 7 46

p *mp*

13

mp *cresc.*

19 47 rit. a tempo rit.

f *rit.* *a tempo* *rit.*

23 rit.

rit. *sf*

6. ПЕСЕНКА ЖЕРМОН

Musical notation for measures 45 and 46. Measure 45 contains a whole rest. Measure 46 contains an 8-measure rest. The piece begins with a treble clef, a key signature of two sharps (F# and C#), and a dynamic marking of *p*. The notation continues with a *mp* dynamic and a *cresc.* marking, featuring several triplet eighth notes.

Musical notation for measures 16 and 17. Measure 16 contains six triplet eighth notes. Measure 17 contains six triplet eighth notes followed by a triplet quarter note. The piece starts with a treble clef, a key signature of two sharps, and a dynamic marking of *f*. A *rit.* marking is present above measure 17.

Musical notation for measures 20 and 21. Measure 20 contains six triplet eighth notes. Measure 21 contains six triplet eighth notes followed by a triplet quarter note. The piece begins with a treble clef, a key signature of two sharps, and a dynamic marking of *a tempo*. *rit.* markings are placed above the final two notes of each measure. The piece concludes with a *sf* dynamic marking.

6. ПЕСЕНКА ЖЕРМОН

Corno I

45

2 solo

p *mp cresc.* *mf dim.*

11 46

5

47 rit. a tempo

p cresc. *f*

22 rit.

sf

6. ПЕСЕНКА ЖЕРМОН

Corno II

45

p *mf dim.*

11 46

5

47 rit. a tempo

p cresc. *f*

22 rit.

sf

6. ПЕСЕНКА ЖЕРМОН

Corno III

45

p *mf dim.*

11 46

p cresc. *f*

47 rit. a tempo

22

rit. *sf*

6. ПЕСЕНКА ЖЕРМОН

Corno IV

45

6

p

mf dim.

11 46

5

47 rit. a tempo

p cresc.

f

22 rit.

rit.

3

sf

Detailed description: The image shows three staves of musical notation for Corno IV. The first staff (measures 45-47) starts with a treble clef and a key signature of one sharp (F#). Measure 45 begins with a piano (*p*) dynamic and a slur over two notes. A repeat sign follows. Measure 46 contains a six-measure rest (marked '6') and ends with a triplet of notes marked *mf dim.*. The second staff (measures 46-47) starts at measure 11. Measure 46 begins with a five-measure rest (marked '5') and continues with a slur over two notes marked *p cresc.*. Measure 47 starts with a forte (*f*) dynamic and includes a ritardando (*rit.*) and a return to *a tempo*. The third staff (measures 47-48) starts at measure 22. It begins with a ritardando (*rit.*) and a slur over two notes. The second measure of this staff also has a ritardando (*rit.*) and ends with a triplet of notes marked *sf*.

6. ПЕСЕНКА ЖЕРМОН

Fagotto I

45

p *mf dim.*

11 46

5

cresc. *f*

47 rit. a tempo

22 rit.

sf

6. ПЕСЕНКА ЖЕРМОН

Fagotto II

45

6

p

mf dim.

11 46

5

47 rit. a tempo

cresc.

f

22 rit.

rit.

3

sf

Detailed description: The image shows three staves of musical notation for the Fagotto II part. The first staff (measures 45-47) begins with a piano (*p*) dynamic and a triplet of eighth notes. Measure 45 contains a sixteenth rest followed by a quarter note. Measure 46 features a five-measure rest. Measure 47 starts with a half note, followed by a quarter note, and ends with a triplet of eighth notes marked *mf dim.*. The second staff (measures 46-47) starts with a five-measure rest, followed by a quarter note, a half note, and a quarter note, with a *cresc.* marking. Measure 47 begins with a half note marked *f*, followed by a quarter note and a half note. The third staff (measures 47-48) starts with a half note marked *rit.*, followed by a quarter note. Measure 48 begins with a half note marked *rit.*, followed by a quarter note, a triplet of eighth notes, and a quarter note marked *sf*.

6. ПЕСЕНКА ЖЕРМОН

a2

45 8 46 8

p

rit. 47 a tempo

19 a2 soli

f 3 3 3 3 3 3

f

Для повторения

Для окончания

22 rit. 3 3 3 3 *sf*

sf

6. ПЕСЕНКА ЖЕРМОН

Timpani

2 45 8 46 8

A single bass clef staff containing three measures. The first measure is marked with a '2' above it. The second measure is marked with a boxed '45' above it. The third measure is marked with an '8' above it. The fourth measure is marked with a boxed '46' above it. The fifth measure is marked with an '8' above it. The staff contains thick black bars representing drum strokes.

47 rit. a tempo rit. rit.
19 tr tr p mf

A single bass clef staff containing four measures. The first measure is marked with a boxed '47' and 'rit.' above it, and 'tr' with a tremolo line below it. The second measure is marked with 'a tempo' above it, and 'tr' with a tremolo line below it. The third measure is marked with 'rit.' above it. The fourth measure is marked with 'rit.' above it. The staff contains musical notation including notes, rests, and dynamic markings 'p' and 'mf'.

6. ПЕСЕНКА ЖЕРМОН

Tromba I

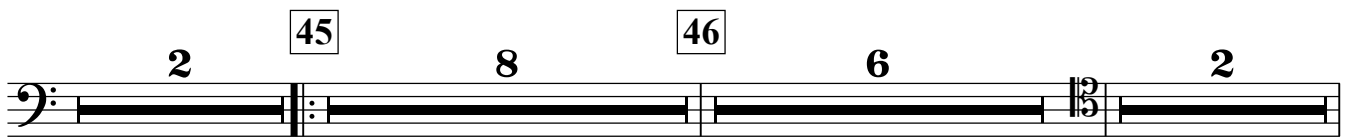
Musical staff with treble clef and key signature of two sharps (F# and C#). The staff contains a double bar line with repeat dots. Above the staff, the numbers 2, 45, 46, and 8 are placed, indicating measure numbers. The staff is otherwise empty.

Musical staff starting at measure 19. The key signature is two sharps (F# and C#). The staff contains a melodic line with eighth notes and triplets. Dynamics include *mf* and *rit.*. The instruction *I sola* is written above the staff. The tempo marking *a tempo* is centered above the staff. The staff ends with a double bar line.

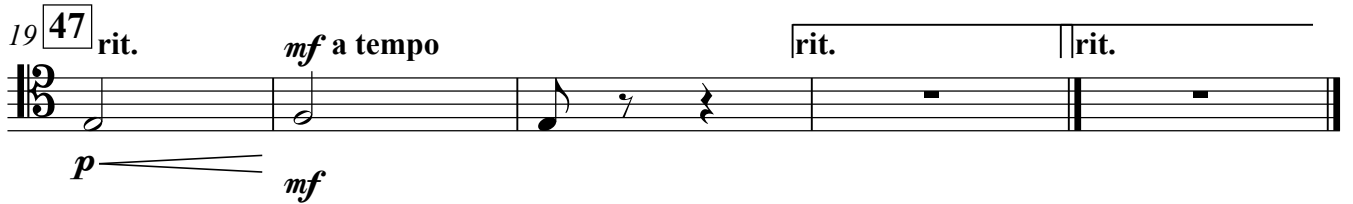
Musical staff starting at measure 23. The key signature is two sharps (F# and C#). The staff contains a single measure with a whole rest. The instruction *rit.* is written above the staff. The staff ends with a double bar line.

Trombone I

6. ПЕСЕНКА ЖЕРМОН



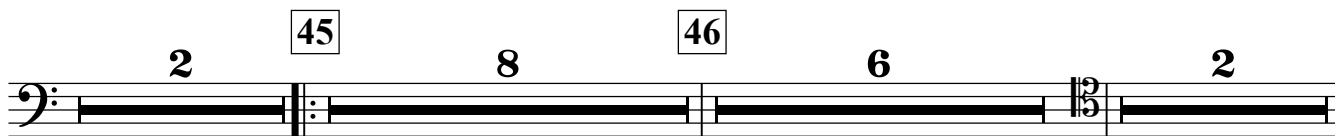
Musical staff with a bass clef and a repeat sign. Above the staff, measure numbers are indicated: 2, 45, 8, 46, 6, 2. The staff contains a solid black line representing a whole rest.



Musical staff with a treble clef and a 3/8 time signature. The staff contains a whole note followed by a quarter rest and a half rest. Dynamics and tempo markings are present: *p* (piano) with a hairpin crescendo leading to *mf* (mezzo-forte), *mf a tempo*, and *rit.* (ritardando) markings. Measure numbers 19 and 47 are shown at the beginning.

Trombone II

6. ПЕСЕНКА ЖЕРМОН



A musical staff in bass clef with a 3/2 time signature. Above the staff, measure numbers are indicated: '2' above the first measure, '45' in a box above the second measure, '8' above the eighth measure, '46' in a box above the ninth measure, '6' above the sixteenth measure, and '2' above the final measure. The staff contains solid black bars representing rests for each measure.



Musical staff starting at measure 19. The time signature is 3/2. The key signature has one sharp (F#). The staff contains the following notes: a quarter note F#4, a quarter note G4, a quarter note A4, a quarter note B4, a quarter note C5, a quarter rest, and a quarter rest. Dynamics are marked as *p* (piano) under the first note and *mf* (mezzo-forte) under the fifth note. Tempo markings include *rit.* (ritardando) above the first measure, *a tempo* above the second measure, *rit.* above the eighth measure, and *rit.* above the final measure. The staff ends with a double bar line.

Trombone III

6. ПЕСЕНКА ЖЕРМОН

2 45 8 46 8

A musical staff in bass clef containing three measures of whole rests. Above the first measure is the number '2', above the second is '45', above the third is '8'. Above the fourth measure is '46', and above the fifth is '8'. The staff is divided into five measures by vertical bar lines.

19 47 rit. a tempo rit. rit.

A musical staff in bass clef starting at measure 19. Measure 47 contains a quarter note followed by a half rest. The staff continues with a quarter rest, a half rest, and a quarter rest. The piece concludes with a final double bar line. Dynamics include *p* (piano) and *mf* (mezzo-forte). Performance markings include *rit.* (ritardando) and *a tempo*.

Tuba

6. ПЕСЕНКА ЖЕРМОН

2 45 8 46 8

A musical staff in bass clef containing three measures of whole rests. Above the first measure is the number '2', above the second is '45', above the third is '8'. Above the fourth measure is '46', and above the fifth is '8'. The staff is divided into five measures by vertical bar lines.

19 47 rit. a tempo rit. rit.

A musical staff in bass clef starting at measure 19. Measure 47 contains a half note with a dynamic marking of *p*. The next measure contains a half note with a dynamic marking of *mf*. The following measure contains a quarter rest followed by a quarter note. The next measure contains a whole rest. The final measure contains a whole rest. Above the staff, the tempo markings 'rit.', 'a tempo', 'rit.', and 'rit.' are placed over their respective measures.

6. ПЕСЕНКА ЖЕРМОН

Violini I

V-no solo

45

mp

espress. molto

cresc.

tutti div. a2

cresc.

7

dim.

46

p

cresc.

f

11 tutti (div.)

unis.

div.

19 47 rit.

a tempo

rit.

f

dim.

Для повторения

V-no solo

Для окончания

23 rit.

sf

Violini II

6. ПЕСЕНКА ЖЕРМОН

45

Musical notation for measure 45, featuring a treble clef and a 7/8 time signature. The measure contains a sequence of eighth notes with stems pointing down, grouped by beams. A *cresc.* marking is present at the end of the measure.

10

46

Musical notation for measure 46, featuring a treble clef and a 7/8 time signature. The measure contains a sequence of eighth notes with stems pointing down, grouped by beams. It includes a triplet of eighth notes with a *dim.* marking below, a *p* marking below, and a *cresc.* marking below.

17

47 rit.

a tempo

Musical notation for measure 47, featuring a treble clef and a 7/8 time signature. The measure contains a sequence of eighth notes with stems pointing down, grouped by beams. It includes a *f* marking below and a *a tempo* marking above.

22

rit.

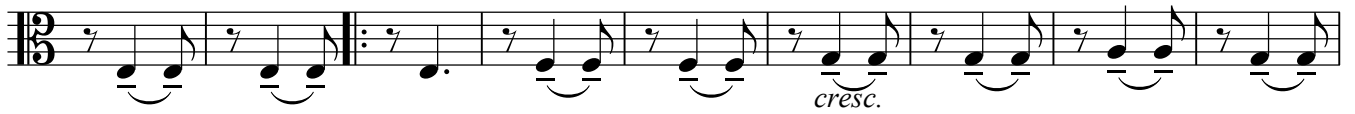
rit.

Musical notation for measure 22, featuring a treble clef and a 7/8 time signature. The measure contains a sequence of eighth notes with stems pointing down, grouped by beams. It includes a *dim.* marking below, a triplet of eighth notes with a *sf* marking below, and a *rit.* marking above.

6. ПЕСЕНКА ЖЕРМОН

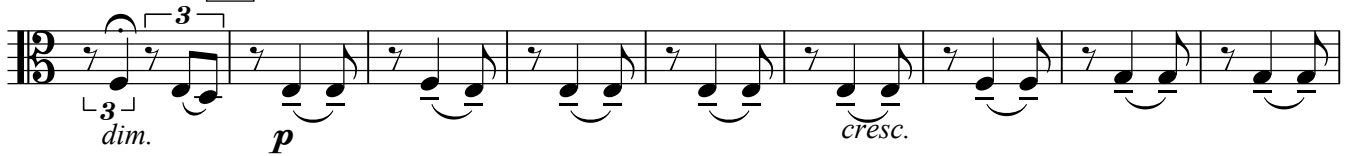
Viola

45



10

46



19 47

rit.

a tempo

rit.

